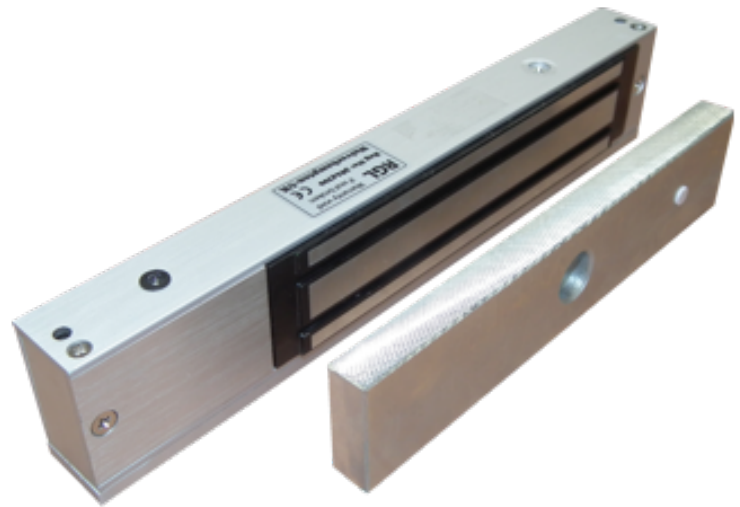
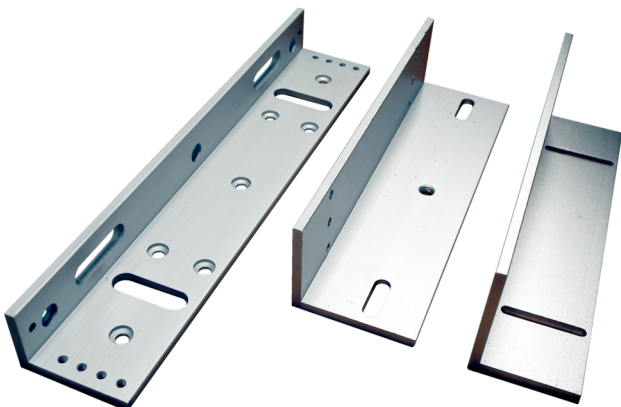


MINI Maglock

- ML600 (Not monitored)
- ML600-M (Monitored)
- 600lbs (300kg) holding force
- 12/24vdc @480/240mA
- Magnet Size - 250L x 42W x 25D (mm)
- Armature Size - 180L x 35W x 10D (mm)
- Weight - 1.85Kgs
- Multi LED indication (M) model



Mini Maglock range is suitable for use on single doors and provides a solution for holding force of 300kg



Optional: adjustable Z & L Bracket

Product code: BK600ZL