

**PCX-RIX8+PSU
PCXRIX8+PSU/S
EURO-ZEM8+PSU**

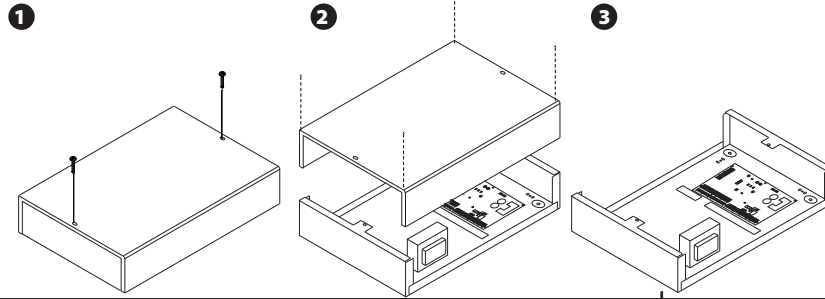
Input Expander With Power Supply



RINS1576-1

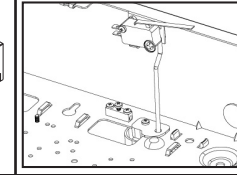


1) Opening the metal casing



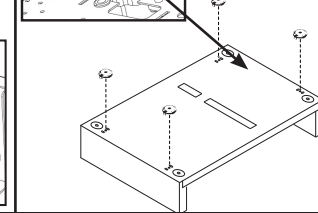
2) Rear Tamper

The new rear tamper mechanism comes already fitted and will operate properly once the casing is fitted to a wall

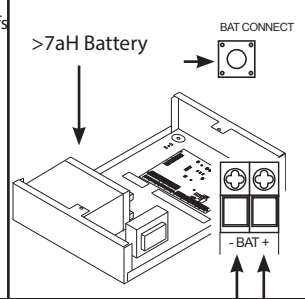


3) Mounting the stand offs

Must be used if using the stand offs so the rear tamper operated correctly.



4) Connecting a Battery



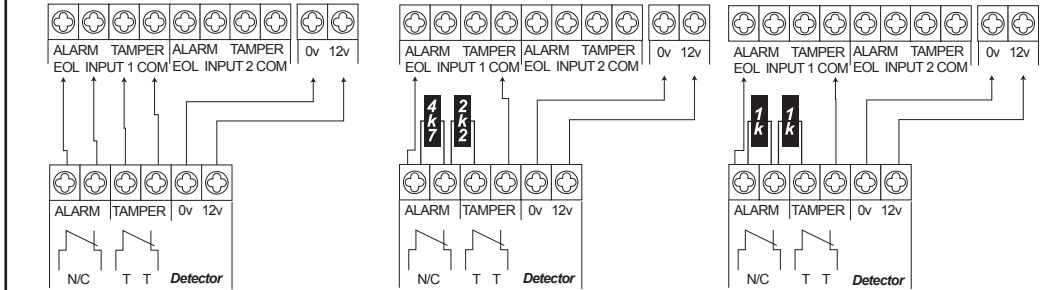
5) Guidance

- Ensure wiring is done to the national wiring regulations in the country where the installation is taking place. In the UK, this is BS 7671 Requirements for electrical installations; IET Wiring Regulations (17th edition). If in doubt, consult a local qualified electrician.
- Ensure that a readily accessible disconnect device incorporated in the premises installation wiring shall be provided external to the equipment with a contact separation of at least 3,0mm and connected as closely as possible to the supply.
- Ensure that the wiring used to connect inputs to the Input Expander, is only connected to circuits operating at SELV voltage.
- When fixing external wires, ensure that means are provided in the installation to prevent the SELV or signal circuits from coming into contact with live parts of the power supply circuit. Wires shall be fixed near their terminal blocks.
- The end of stranded conductor shall not be consolidated by soft soldering at places where the conductor is subjected to contact pressure.
- On completion of wiring use tie-wraps to prevent any loose wires causing a safety hazard (material of cables tie shall be rated at least HB or better).- Cables ties and hoses shall be separate for power supply cable and SELV wirings.
- Size of protective bonding conductors: minimum section 1.5mm².

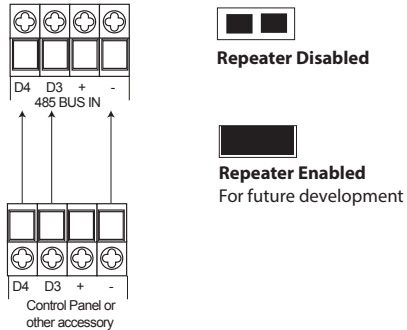
• This product is for wall mounting installation only. Ensure that the mechanical mounting is suitable for the weight of the product. Use suitable fixings to fix to the surface and ensure that no pipes or wiring are present when drilling into the wall.

6) Input Wiring Connections (Double Pole and DEOL)

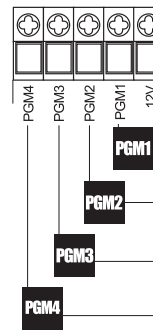
PCX-RIX8+PSU, EURO-ZEM8+PSU, PCXRIX8+PSU/S **EURO-ZEM8+PSU, PCXRIX8+PSU/S** **PCX-RIX8+PSU**



7) RS485 Bus Wiring



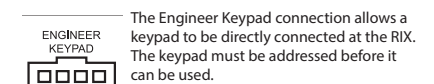
8) Output Wiring



9) LED Status

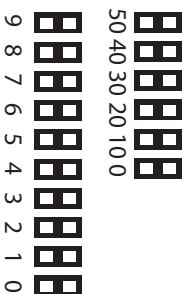
POWER (LED1)	485-IN (LED2)	A-FAULT (LED3)	485-OUT (LED4)	P-FAULT (LED5)
GREEN	BLUE	RED	BLUE	RED
<p>POWER: +12V supply 485 IN: Data "IN" OK A FAULT: Fuse Faults 485 OUT: Data "OUT" OK P FAULT: Power fault NOTE: All LEDs will be disabled when the tamper switch is closed</p>				

10) Engineer Operations



The Engineer Keypad connection allows a keypad to be directly connected at the RIX. The keypad must be addressed before it can be used.

11) Assigning Addresses



Address:
To address a ZEM/RIX, link out the headers as shown in the below example:

Address 04: 4 00
Address 12: 2 10
Address 20: 0 20

NOTE: The tamper switch must be open when changing the address. The new address will then be confirmed when the tamper switch is closed

12) Technical Specification and Warranty

Mains	220-240AC 50Hz 230V AC 50Hz -15/+10% (certified)
Power Supply	2.5A
Fuse F1A	Slow Blow 500mA
Fuse F2A -F6A	800mA
Output	13.75V 1.7A Continuous
Battery Fuse	3.15A Quick Blow
Bus Fuse	1.25A Quick Blow
Outputs 1-4	100mA Each
Current Cons.	65mA
PD6662:2010 (12 hrs standby if notified by an ARC). For 17Ah =1350mA	

13) Compliance

For electrical products sold within the European Community. At the end of the electrical products useful life, it should not be disposed of with household waste. Please recycle where facilities exist. Check with your Local Authority or retailer for recycling advice in your country.

Suitable for use in systems installed to PD6662:2010, EN50131-1:2006+A1:2009; EN50131-6:2008 at Security Grade 3, Environmental Class II. Subject to the grading of the overall system.

This product is sold subject to our standard warranty against defects in workmanship for a period of two years. In the interest of continuing improvement of quality, customer care and design, Pyronix Ltd reserve the right to amend specifications without giving prior notice.

14) Customer Support



Customer Support Line: 0845 6434 999 (local rate) or call +44(0)1709 535225
Hours: 8:00am - 6:30pm, Monday to Friday

customer.support@pyronix.com
marketing@pyronix.com

www.pyronix.com
Pyronix Ltd, Secure House, Braithwell Way,
Hellaby, Rotherham, S66 8QY, UK